



KSD-541, KSD-541-P

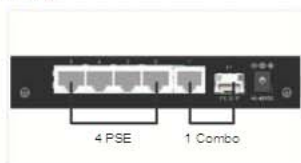


Industrial 5-Port L2 Fast Ethernet Switches with 1 SFP Slot and 4 PoE PSE Ports

Product Highlights:

- Compact switch
- SFP fiber options
- 802.3af PoE
- Industrial design

Ports



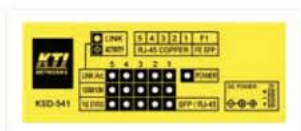
Panel Mounting



DIN-Rail Mounting



Top LED Display



Key Features:

- Provides 5 10/100Mbps RJ-45 and one 100Mbps SFP slot
- All copper ports support auto-negotiation and auto-MDI/MDI-X detection
- Provides full wire speed forwarding
- Supports 802.3x flow control for full-duplex and backpressure for half-duplex
- Provides SFP for optional optical fiber connection
- Provides four 802.3af-compliant PoE-enabled PSE ports
- Provides two types of power supply interfaces - Jack and terminal block
- Supports Stand-alone, Wall, Din-Rail, and Panel mounting
- Industrial-rated emission and immunity performance

Specifications:

Standard	IEEE 802.3, 802.u, 802.3x, 802.3af
Network Ports	4 10/100Mbps Fast Ethernet copper ports 1 combo port - 10/100Mbps copper & SFP
Copper Port	Shielded RJ-45, 10/100Mbps, auto-negotiation, auto-MDI/MDI-X support
SFP	Fast Ethernet 100Base-FX compliant slot for standard SFP transceiver
Network Cables	10/100Mbps copper: Cat.5 up to 100m, 100Base-FX: 62.5/125, 50/125 MM fiber, 9/125 SM fiber
Power over Ethernet	IEEE 802.3af compliant, PSE on Port 2 ~ Port 5 Power delivery 48V 15.4W max. at port output for a Cat.5 distance of 100 meters
MAC Addresses	Table with 1K entries
LED Indication	Display on both top and front panels Per unit: power, Per port: speed, link/activity & PoE status
DC Power Input	Screw terminal block: power +/- and PE contact DC jack: -D 6.3mm/+D 2.0mm Operating voltage range: +6 ~ +57VDC (+48V up for PoE operation)
Power Consumption	4W max. with no PoE support 70W max. for 4 PoE PSE max. output
Housing	Enclosed metal with no fan
Dimension	144 x 104.5 x 26 mm (WxDxH)
Mounting Support	Wall, DIN-Rail, Panel Mounting (optional)
Environment	Operating Temperature: -20°C ~ +70°C Storage Temperature: -20°C ~ +85°C Relative Humidity: 10% ~ 90% non-condensing
Approval	FCC Class A, CE mark Class A EN60950-1/IEC60950-1 safety NEMA TS2-2003 Environment tests



Power Terminal Block



EMI EMS Safety Environmental Tests:

Test	Standard	Specifications
FCC/EMI	FCC Rule Part 15	Class A
CE/EMC/EMI	EN55022, CISPR 22	Class A
CE/EMC/Harmonic	EN 61000-3-2	< 75 W
CE/EMC/VFF	EN 61000-3-3	Clause 5
CE/EMC/EMS	EN 55024	
ESD Test	IEC 61000-4-2	Contact +/-8kV Air +/-15kV
RS Test	IEC 61000-4-3	Strength: 10V/m
EFT/BURST	IEC 61000-4-4	DC line: 1kV Signal line: 2kV
Surge Immunity	IEC 61000-4-5	DC Power line: 0.5kV
CS Test	IEC 61000-4-6	140dBuV Level 3
Magnetic Field Imm.	IEC 61000-4-8	50Hz 40A/m
Voltage Dips Imm.	IEC 61000-4-11	Interrupt 95%; C Dips 95%; B
Safety	EN 60950, IEC 60950	
Dielectric Voltage	IEEE 802.3	TP, 1500VAC/60sec
Insulation Resistance	IEEE 802.3	TP, 500VDC/10Mohm
Cold Test	IEC 68-2-1 Test Ad	-20°C, 96hrs
Dry Heat Test	IEC 68-2-2 Test Bd	+70°C 40% RH 96hrs
Damp Heat Test	IEC 68-2-3	+50°C 90% RH 96hrs
Storage Test	IEC 68-2-48	-20°C 96hrs +85°C 40% RH 96hrs
Vibration Test	IEC 68-2-34	5-30Hz, 0.5g Operating
NEMA TS2 Vibration test	NEMA TS2-2003 Proc. 2.2.8.3-4	5-30Hz, 0.5g x/y/z, 1hr/axis
NEMA TS2 Shock test	NEMA TS2-2003 Proc. 2.2.9	Half-sine pulse 10g, 11ms, x/y/z
NEMA TS2 Environment test	NEMA TS2-2003 Proc. 2.2.7.3-6	Temp: -34~+74°C Humid: 0%~90% Power: +5V~+30V



FCC Part 15, Class A
CISPR 22 Class A

Katron Technologies Inc.

15F-7, No. 79, Sec. 1, Hsin Tai Wu Rd.,
Hsi-chih District, New Taipei City, Taiwan
Tel: 886-2-2698-3878
Fax: 886-2-2698-3873
E-mail: kti@ktinet.com.tw
URL: http://www.ktinet.com.tw

KTI Networks Inc.

10415-A Westpark Drive, Houston,
TX 77042, U.S.A.
Tel: 1-713-266-3891
Fax: 1-713-914-0555
E-mail: contact@ktinet.com
URL: http://www.ktinet.com

Trademarks: All brand names and trademarks or registered trademarks of their respective holders. This information is subject to change without prior notice.

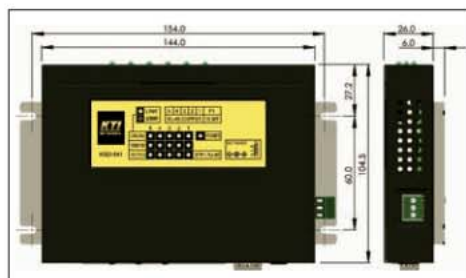
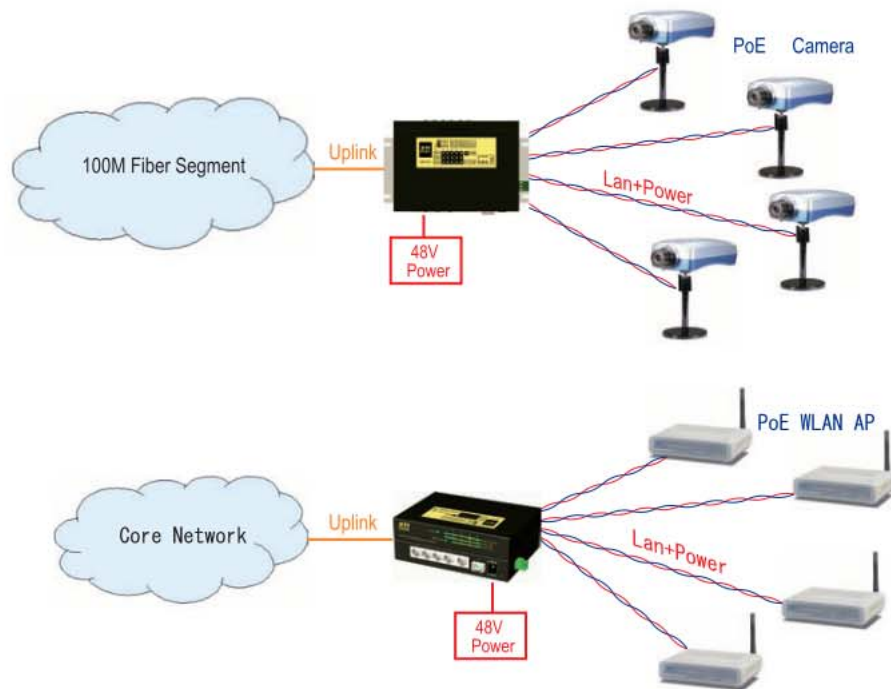
Ordering Informations:

- KSD-541 Industrial L2 Fast Ethernet switch (No PoE support, No transceiver installed)
- KSD-541-P Industrial L2 Fast Ethernet switch with PoE support (No transceiver installed)

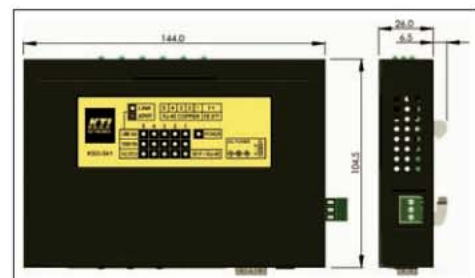
Accessories:

Panel mounting kit (bracket & screws) for KSD-541 and KGD-600
AC Power adapter: input 100~240VAC, output 48VDC/24W, commercial rated, AC power cord
KTI quality SFP transceivers
Recommendation for Din-Rail power: Input 100-240VAC, Output 48VDC/75W/60W/40W

Applications:



Panel Dimension



DIN-Rail Dimension